

# South Gloucestershire Landscape Character Assessment

## Annex II: Strategic Viewpoints

### South Gloucestershire Council

**Final Draft Report for Adoption Chapter 7**

Prepared by LUC

September 2024



Version	Status	Prepared	Checked	Approved	Date
1	Draft Method and Pilot	E White L Jewitt	K Davies	K Davies	03.04.2023
2	Draft Report	L Jewitt V Kakar	E White	K Davies	16.05.2023
3	Draft Report	E White L Jewitt	E White	K Davies	14.07.2023
4	Final Draft	E White L Jewitt	E White	K Davies	01.11.2023
5	Final Draft (updated following New Local Plan Phase 3 consultation)	L Jewitt	E White	K Davies	12.06.2024
6	Final Draft Report for Adoption	L Jewitt	E White	K Davies	11.09.2024



**Land Use Consultants Limited**

Registered in England. Registered number 2549296. Registered office: 250 Waterloo Road, London SE1 8RD. Printed on 100% recycled paper

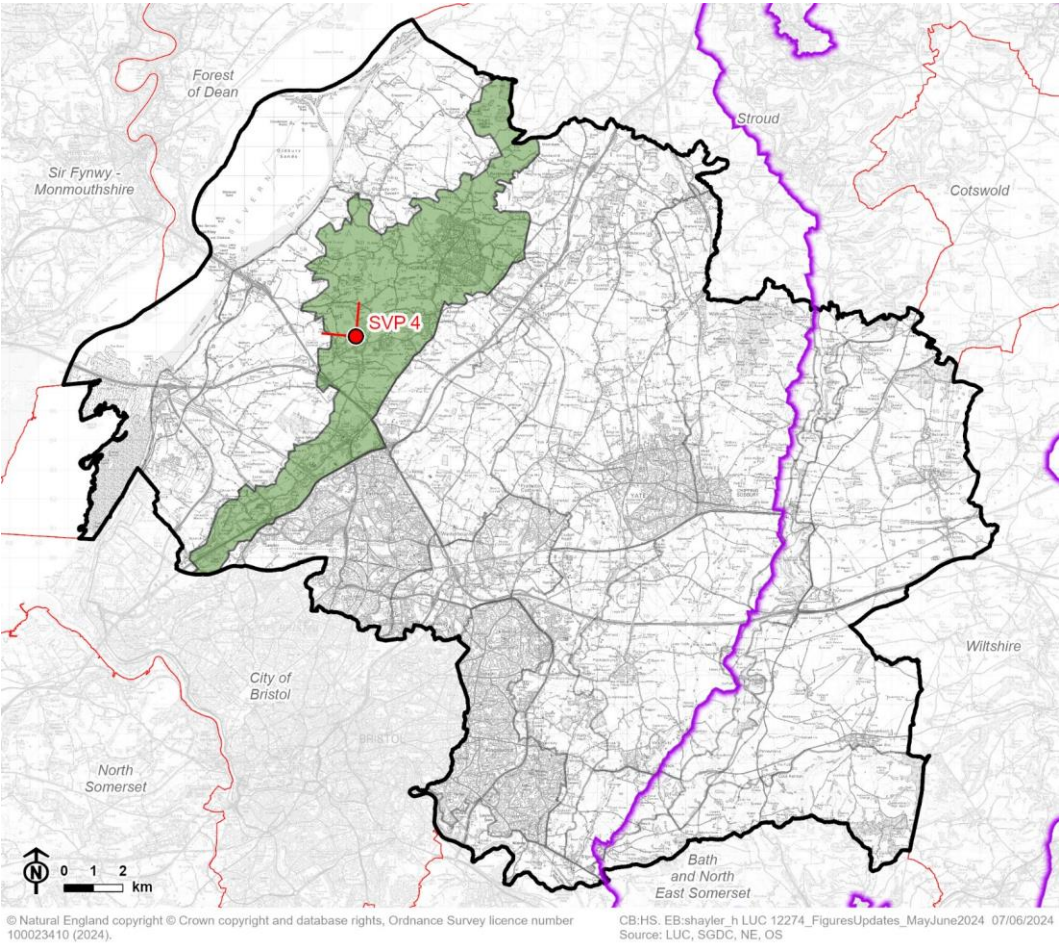
# Contents

<b>Chapter 7</b>	<b>40</b>
Strategic Viewpoint 4: Old Down	
Characteristics	45
Summary	46

# Chapter 7

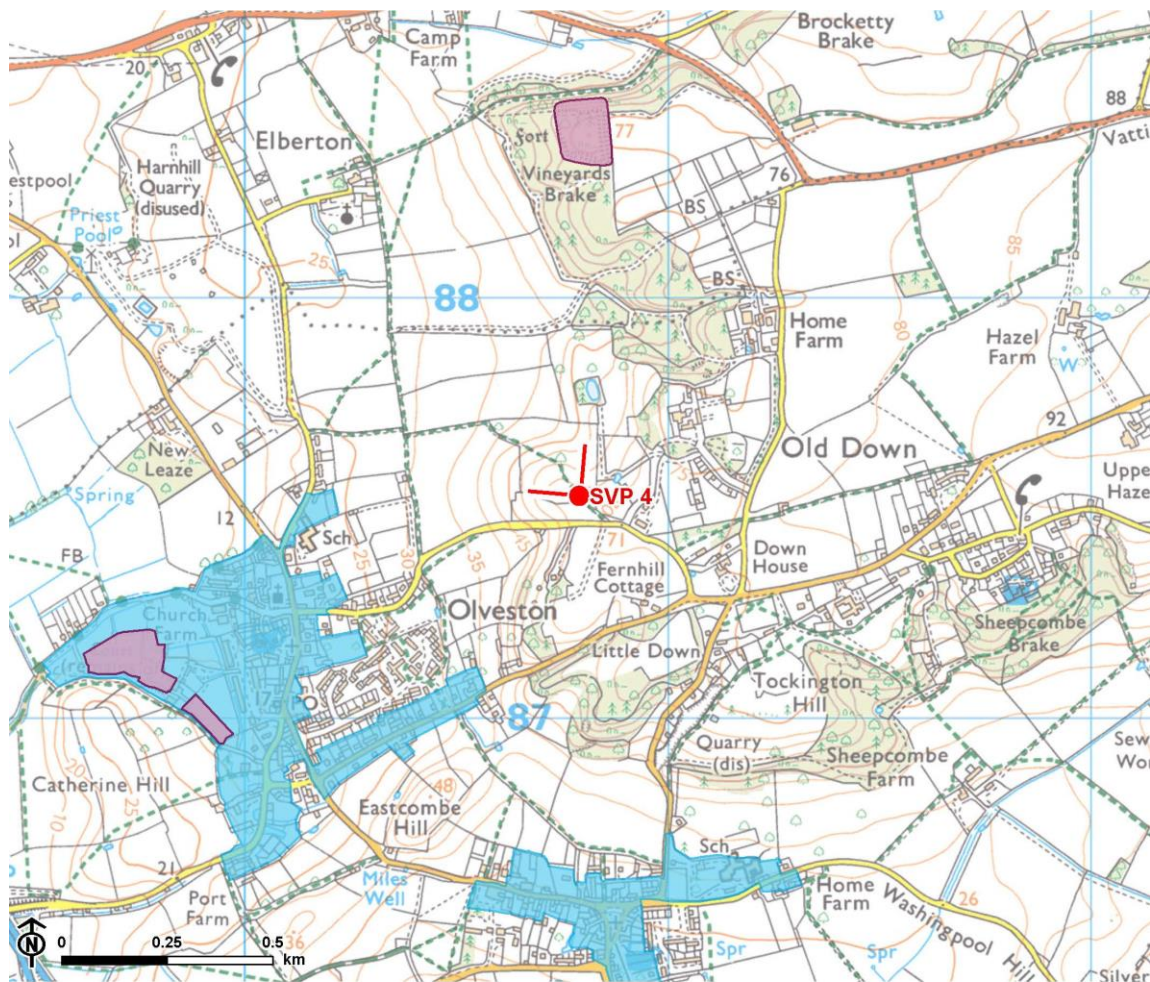
## Strategic Viewpoint 4: Old Down

Figure 7.1: Location of Strategic Viewpoint 4 and landscape character context



-  Council boundary
-  Neighbouring local authority
-  Cotswolds National Landscape (AONB) boundary
-  LCA 18: Severn Ridges
-  Strategic viewpoint and angle

Figure 7.2: Detailed map of the location of Strategic Viewpoint 4



© Natural England. © Historic England. Contains Ordnance Survey data © Crown copyright and database rights, Ordnance Survey licence number 100023410, 2023

- Conservation area
- Scheduled monument
- Strategic viewpoint and angle



## Viewpoint Information

**Grid reference:** ST 60807 87533

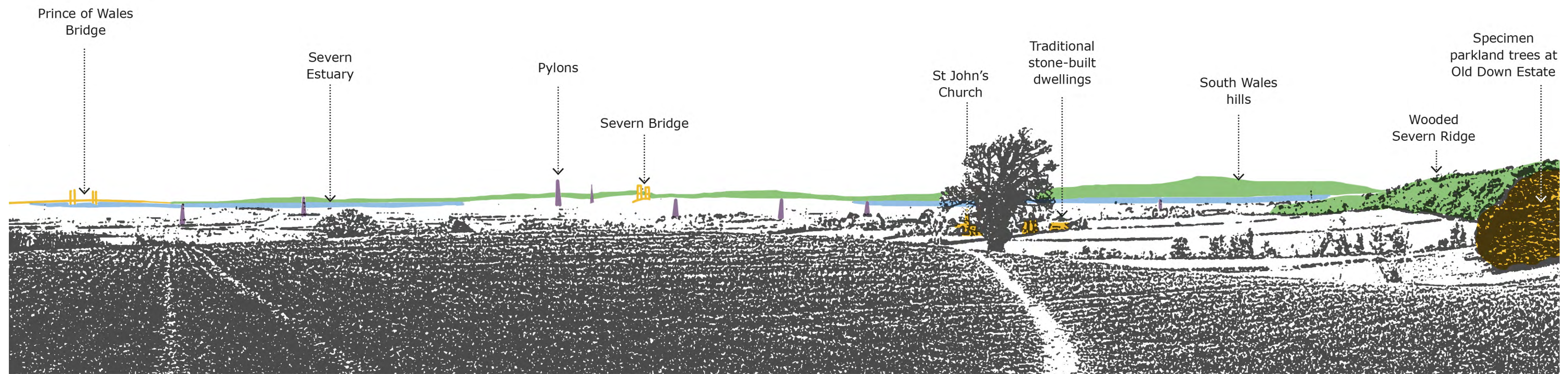
**View location:** Public footpath OOL/33/30 off Vicarage Lane, Old Down.


**View direction:** View north and west across LCA 20: Pilning Levels, towards LCA 21: Severn Shoreline and Estuary.

**Relationship with Visually Important Hillside (VIH):** The viewpoint is located on the Severn Ridges VIH.

**Experienced by:** Recreational users of public footpath OOL/33/30 and transient views for pedestrians, cyclists and motorists travelling west on Vicarage Lane towards Olveston.

Figure 7.3: View Composition of Strategic Viewpoint 4



 Key landscape feature

 Landmark / historic feature

 Detractive feature

Figure 7.4: Full Panoramic Photograph of Strategic Viewpoint 4



Strategic Viewpoint 4: Old Down



Strategic Viewpoint 4 (continued)



## Characteristics

### Popularity, access and facilities

- Views from this viewpoint are representative of those described in LCA 18: Severn Ridges, which notes that *“the scarp provides frequent expansive views west over the adjacent flat, low-lying Levels, towards the Severn Estuary and across to South Wales and the Forest of Dean”*.
- The viewpoint is publicly accessible, located on public footpath OOL/33/30.
- A small litter bin is provided adjacent to the footpath on Vicarage Road, suggesting that this is a popular and well-used route.

### Quality, value and features of the view

- An elevated viewpoint located along the Severn Ridges VIH, from which the land slopes northwards and westwards allowing a panoramic view (270°) north, west and south-west over the surrounding low-lying 'levels' landscape (characterised by flat, small and regular fields, and blocks of woodland), towards the Severn Estuary, with the distinctive wooded hills of the Wye Valley and South Wales forming a prominent backdrop in views.
- The view to the north extends along the wooded slopes of the Severn Ridges VIH which form a notable landscape feature and includes specimen trees associated with the Old Down Estate (locally listed) which exert a designed parkland character.
- Both the Severn Bridge (Grade I listed) and The Prince of Wales Bridge form landmark features within the view (located 5km and 7km from the viewpoint, respectively).
- The spire of St John's Church in Elberton (Grade II\* listed), surrounded by a small cluster of traditional stone dwellings, forms a focal point in the foreground, located 0.9km to the north-west of the viewpoint.

- Pylon lines cross the levels near the edge of the estuary in views to the west and slightly detracts from the overall composition of the view, along with large commercial buildings near Northwick and the M48 (with associated gantries).

## Summary

The Old Down viewpoint is categorised as a SVP as it meets most of the criteria to some extent. It is noted in the South Gloucestershire Landscape Character Assessment as being a natural observation point from which to appreciate the landscape; it is located on a public footpath with a litter bin provided suggesting that it attracts many visitors; and it provides a panoramic view that takes in the notable landscape features of the levels, the wooded slopes of the Severn Ridges, the Severn Estuary and the hills of the Wye Valley and South Wales, and the landmark features of St John's Church, the Severn Bridge and the Prince of Wales Bridge.

Report produced by LUC

# Report produced by LUC

## **Bristol**

12th Floor, Colston Tower, Colston Street, Bristol BS1 4XE

0117 929 1997

bristol@landuse.co.uk

## **Cardiff**

16A, 15th Floor, Brunel House, 2 Fitzalan Rd, Cardiff CF24 0EB

0292 032 9006

cardiff@landuse.co.uk

## **Edinburgh**

Atholl Exchange, 6 Canning Street, Edinburgh EH3 8EG

0131 202 1616

edinburgh@landuse.co.uk

## **Glasgow**

37 Otago Street, Glasgow G12 8JJ

0141 334 9595

glasgow@landuse.co.uk

## **London**

250 Waterloo Road, London SE1 8RD

020 7383 5784

london@landuse.co.uk

## **Manchester**

6th Floor, 55 King Street, Manchester M2 4LQ

0161 537 5960

manchester@landuse.co.uk

## **landuse.co.uk**

Landscape Design / Strategic Planning & Assessment

Development Planning / Urban Design & Masterplanning

Environmental Impact Assessment / Landscape Planning & Assessment

Landscape Management / Ecology / Historic Environment / GIS & Visualisation